
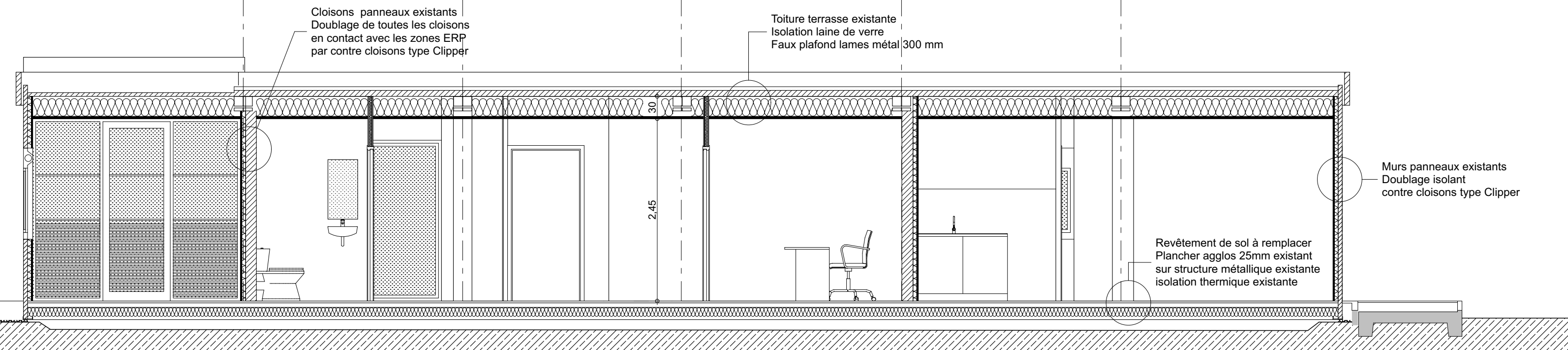
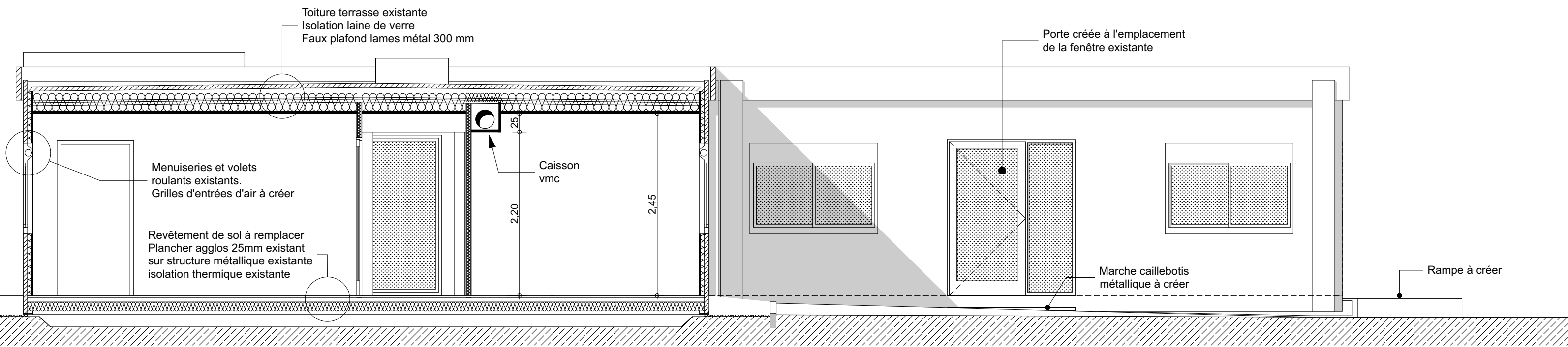


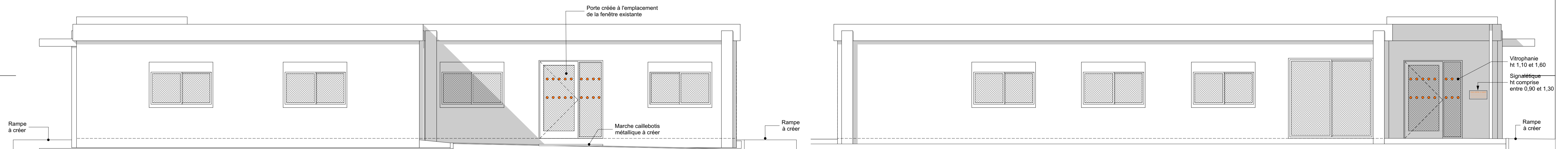
MAITRE D'OUVRAGE		LIGUE CONTRE LE CANCER 25 Bd Gambeson - 82000 MONTAUBAN		TEL: 05 63 63 52 39
Dossier	653.17.LIG	Aménagement intérieur des bureaux de la Ligue Contre le cancer		 11 Rue Bessières B.P. 835 / 82 008 MONTAUBAN CEDEX tel: 05 63 91 19 10 fax: 05 63 91 19 01 b11@b11architecture.com
Date	03 08 2017			
Echelle	1:50	PROJET		140 Avenue de l'Europe - 82000 Montauban
05		COUPES FACADES		653.17 LIG



COUPE AA
Ech 1/100

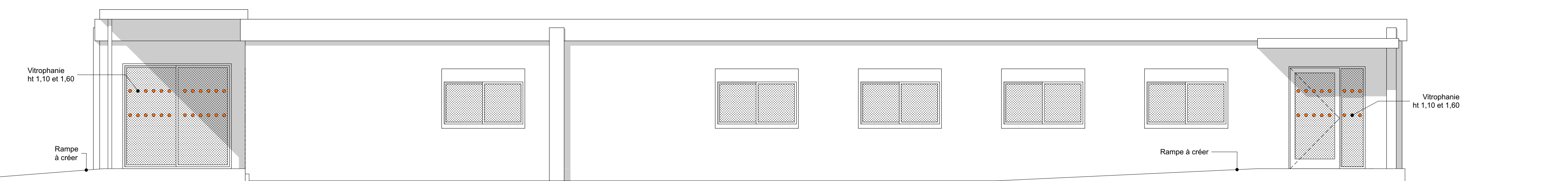


COUPE BB
Ech 1/100

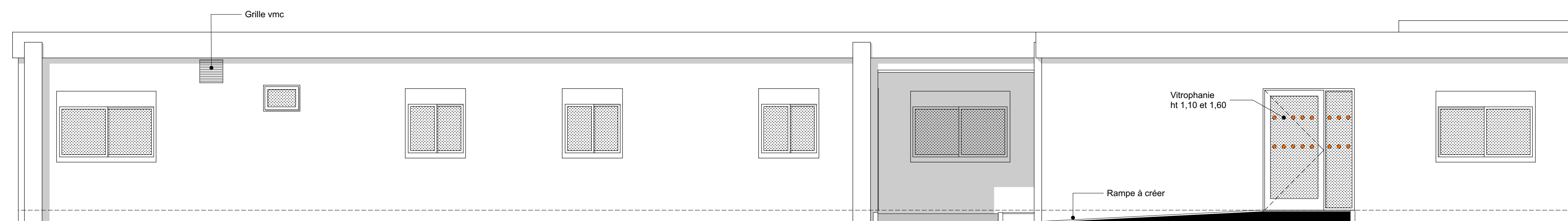


FACADE NORD
Ech 1/100

FACADE SUD
Ech 1/100



FACADE EST
Ech 1/100



FACADE OUEST
Ech 1/100